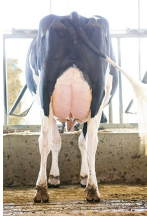




SIEMERS RZ PAZZLE 34954-ET TR TP TC TY TV TL TD TE HH1T HH2T HH3T HH4T HH5T HH6T

ROZLINE X DELTA-LAMBDA X DENVER

Sire: SIEMERS RENEGADE ROZLINE-ET
Dam: SIEMERS LMDA PARIS 27856-ET EX-91
3-05 2X 365D 17,500 kgM 4.1% 716 kgF 3.5% 618 kgP
MGS: FARNEAR DELTA-LAMBDA-ET



DAM Siemers Lmda Paris 27856-ET



MGD Siemers Denver Paris-ET



MGGD Quality Tango Paris

INDEXES

TPI	3044
NM\$	851
CM\$	874
Feed Efficiency (\$)	224
Feed Saved	-62
HHP\$	1060
DWP\$	826
WT\$	2
CW\$	-43

PRODUCTION

PTA Milk (lbs)	547
PTA Protein (lbs)	48
PTA Protein (%)	0.11
PTA Fat (lbs)	95
PTA Fat (%)	0.26
Production Reliability %	83
Dtrs/Herds	0/0

TYPE

PTA Type	3.17
Udder Composite	2.73
Feet & Leg Composite	1.96
Body Weight Composite	1.53
Dairy Composite	1.57
Type Reliability %	82
Dtrs/Herds	

DAUGHTER FERTILITY

Fertility Index/Rel. %	0.2
DPR/Rel. %	0.0/78
HCR/Rel. %	1.8/77
CCR/Rel. %	1.2/78

SIRE FERTILITY

SCR/Rel. %	-0.3/96
------------	---------

MANAGEMENT TRAITS

SCE/Rel. %	2.4/97
DCE/Rel. %	2.5/70
Gestation Length/Rel. %	-0.2/77
Early First Calving/Rel. %	-0.7/73
SSB/Rel. %	5.7/95
DSB/Rel. %	5.2/65
Productive Life/Rel. %	4.4/78
Livability/Rel. %	-1.3/72
Residual Feed Intake/Rel. %	-171/26
SCS/Rel. %	2.75/81
Milking Speed/Rel. %	101/77

CDCB/HA TYPE TRAITS

Stature	short	1.62	tall
Strength	frail	1.80	strong
Body Depth	shallow	1.63	deep
Dairy Form	tight ribbed	1.33	open ribbed
Rump Width	narrow	2.11	wide
Rump Angle	high pins	-0.91	sloped
Rear Leg (side view)	posty	-0.79	sickled
Rear Leg (rear view)	hock-in	2.78	straight
Foot Angle	low angle	2.77	steep angle
Feet & Leg Score	low	1.95	high
Fore Udder	loose	3.42	strong
Rear Udder Height	low	3.64	high
Rear Udder Width	narrow	3.52	wide
Udder Cleft	weak	1.52	strong
Udder Depth	deep	2.15	shallow
Front Teat Placement	wide	1.53	close
Rear Teat Placement	wide	1.52	close
Teat Length	short	0.56	long

ZOETIS WELLNESS TRAITS CDCB

	Value	Rel. %		Value	Rel. %
	102	53	Mastitis	3.1	72
	103	47	Retained Placenta	-0.2	71
	99	44	Metritis	1.7	69
	102	43	Hypocalcemia/Milk Fever	-0.1	60
	99	38	Ketosis	2.8	69
	99	36	Displaced Abomasum	0.9	74
	95	43	Lameness		
	100	37	Cow Respiratory Disease		
	107	32	Cow Abortion		
	105	42	Twinning		
	107	24	Cystic Ovary		
	N/A	N/A	Heifer Livability	0.2	60
	99	35	Calf Respiratory Disease		
	100	40	Calf Scours		
	89	40	Calf Livability		